



COVID 19 VISITOR FACT SHEET: INTERIM SAFETY MEASURES
AT PRINCESS YACHTS



WHAT WE'RE DOING AT PRINCESS YACHTS

In order to prepare ourselves for full production we have been working in partnership with Health, Safety and Environment and the Works Committee to develop and implement measures to allow a proportion of our workforce to return to work and operate in a safe environment. These preparations meet or exceed government advice for social distancing and the correct use of Personal Protective Equipment (PPE).

In this short guide we've outlined the safety measures we have put in place to protect our employees against infection and what you can do to help. All employees, contractors and visitors must comply with these procedures or they will not be permitted to enter any Princess Yachts site.

Actions we are taking include:

- Phased and controlled restart for staff returning to the workplace
- Change to shift patterns to ensure social distancing is maintained
- Hand sanitiser stations at the end of every boat in build and around all areas of the workplace
- Staff working from home where appropriate
- Informative signs placed around the workplace to ensure employees know the facts about Covid-19
- Clearly marked one-way systems where appropriate
- Reorganised welfare areas to ensure social distancing
- Two metre markers installed along all walkways both inside and out to ensure social distancing can be easily adhered to
- Pulse oximeter and temperature monitoring available across all sites



HOW YOU CAN HELP US MAINTAIN HYGIENE IN THE WORKPLACE



If you or any member of your household are displaying **symptoms** of Covid-19, please contact the department you are visiting to re-arrange your visit.



Please ensure hands are washed for a minimum of **20 seconds upon arrival** using NHS guidelines.

Use regular sanitary soap or detergent and **repeat** the process throughout your visit.



We're delighted that you've come to visit us, but we ask if you could please **refrain** from **shaking hands** so we can keep everyone as safe as possible.



Please **check in** at **Newport Street** before undertaking work or visiting **King Point** or **Mayflower Marina**. When checking-in at Newport Street, you will be provided with the appropriate safety wear and PPE and will be briefed on new health and safety regulations by the employee you are visiting.

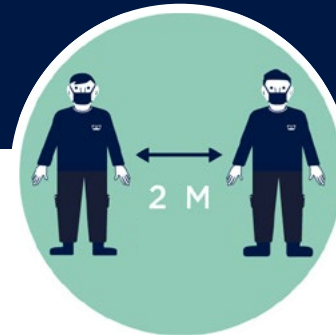
➤ The Head of Health, Safety and Environment department is responsible for ensuring that this procedure is in line with Health, Safety and Environmental compliance obligations and aligns with the UK Government control strategy.

HOW YOU CAN HELP US MAINTAIN HYGIENE IN THE WORKPLACE



You will be provided with the appropriate **face masks*** and disposable nitrile **gloves** which are to be worn at all times in production areas. In addition **safety shoes, eyewear, life jackets** and **high visibility** attire are to be used where applicable.

*All visitors **MUST** carry a mask with them at all times. Outdoors, the mask can be removed from the face at the discretion of the wearer (unless social distancing cannot be maintained, in which case the mask **MUST** be worn). When walking within all internal **PYL** buildings (operational areas and offices) masks are to be worn.



Please ensure you maintain the **social distancing** requirements of a minimum of **2 metre separation**, this is a mandated requirement in accordance with HSE and UK Government advice.



All **company vehicles, forklift trucks, manual handling equipment and communal tools** are being **wiped down before and after use** with detergent or disinfectant but please refrain from touching work surfaces unnecessarily.

CHANGES TO THE WORKPLACE

When you arrive at Princess, the employee or area you are visiting will brief you on some of these safety measures. We expect all visitors to follow these measures fully.

SANITISER STATIONS

Sanitiser stations are placed in all areas of work and where increased surface contact is likely such as at clock machines.



DISTANCE INDICATORS AND ONE-WAY SYSTEMS

Distance markers around all sites to reiterate the need for spacings. One way walkways must be considered where possible.



PPE STATIONS

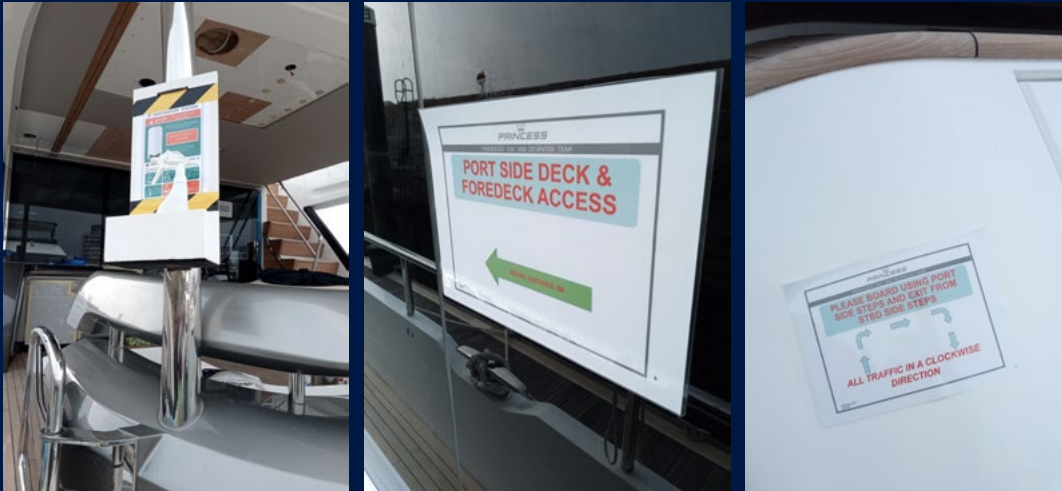
Easily accessible PPE stations across all sites.



CHANGES TO THE WORKPLACE

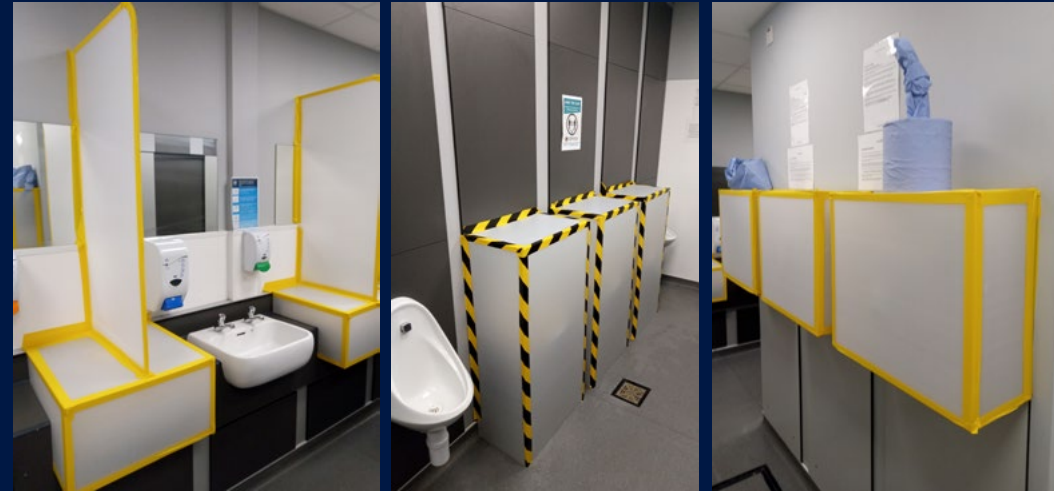
ON-BOARD YACHTS

Sanitiser stations are position aft on-board every yacht. Dedicated routes whilst on-board have also been put into place.



BATHROOMS

Sinks, urinals and hand dryers have been blocked off to ensure social distancing measures are maintained.



CANTEENS

All areas of the canteens have been segregated to allow social distancing to be practised during breaks.



CHANGES TO THE WORKPLACE

DEDICATED ACCESS AND EGRESS ROUTES

Dedicated access and egress routes to reduce choke points and congestion in order to maintain social distancing.



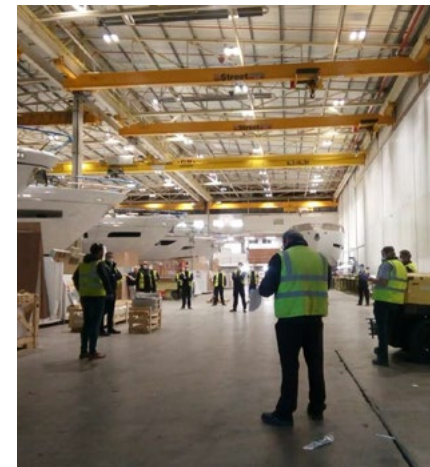
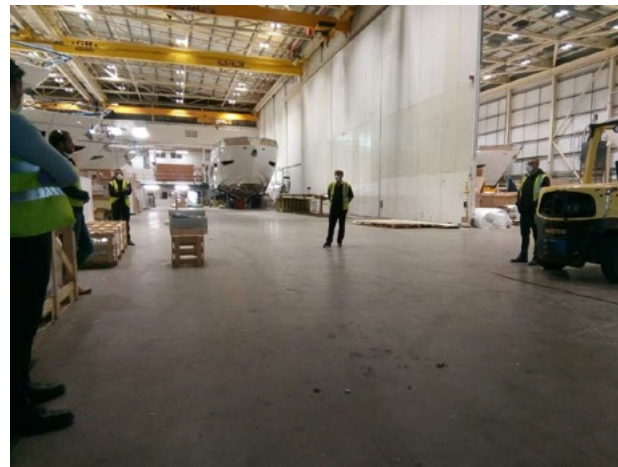
BENCH SEGREGATION

Bench areas are segregated to prevent contact with adjacent trades and to aid in the containment of airborne contaminants.



GROUP AND MANAGER BRIEFINGS

Managers and groups of employees briefed separately to ensure requirements are conveyed and understood in a clear a cohesive manner.



COVID-19 INTERIM SAFETY MEASURES

“From the outset, our goal has been to craft our yachts with dedication and attention to detail which cannot be done without our 3,000 skilled employees.

We have made extensive changes throughout all of our sites, including hand sanitiser stations at the end of every boat in build and around all areas of the workplace, informative signs to ensure employees know the facts about Covid-19, reorganised welfare areas and two meter markers along all walkways to ensure social distancing can be easily adhered to. All required and mandatory PPE will be available to all employees and visitors at all sites across the business. Nevertheless, your safety is ultimately reliant on your ability to adopt the guidelines that we have put in place.

Safety is the most important thing to us and we welcome any suggestions you may have to improve the safety of our facilities.”

Antony Sheriff
Executive Chairman and CEO



If you need to report a breach or have any queries, please contact one of our HSE representatives or
Matt Clark.

Matt Clark

Head of Health, Safety and
Environment (HSE)

E: Matthew.Clark@princessyachts.com
M: 07894296462

**Health and Safety
helpline:
01752 203819**